



SMART MONITORING AND PREDICTIVE ANALYSIS OF HOME APPLIANCES USING SENSOR DATA

Prof. Archana Ugale, Siddheshwar Parshuram Kale, Shreyash Sunil Majge, Harshada Kishor Gharate, Renuka Digambarrao Vyavhare Department of Information Technology, SVIT, Nashik, Maharashtra, India

ABSTRACT

This paper presents an IoT-based system for monitoring and analyzing the performance of electronic products using sensor data. The system uses sensors such as temperature, humidity, voltage, and current to continuously track the condition of a product. These sensors collect real-time data on how the product operates under different conditions and send it to a cloud platform for storage and analysis. The collected data helps manufacturers understand important parameters like overheating, power consumption, and performance variations. By studying this information, companies can identify faults, estimate product lifespan, and improve the design and functionality of future products. This approach builds a smart connection between the product and the manufacturer, ensuring better quality, improved performance, and increased reliability through data-driven insights.

Keywords: Internet of Things (IoT), Smart Product Monitoring, Sensor Data Analysis, Predictive Maintenance, Cloud Computing, Fault Detection, Product Performance Optimization.

I. Introduction

In recent years, the Internet of Things (IoT) has become one of the most transformative technologies, enabling physical devices to communicate, collect, and share data intelligently. With the rapid growth of smart and connected systems, industries are now focusing on improving the performance, reliability, and lifespan of their products through real-time monitoring and data analysis. Traditional maintenance systems often fail to detect early signs of product failure, leading to increased downtime, high repair costs, and reduced efficiency.

To address these challenges, IoT-based monitoring systems offer a modern solution by integrating sensors with everyday products. These sensors—such as temperature, humidity, voltage, and current—continuously measure the product's operational parameters and send real-time data to a cloud platform. The collected data is then analyzed to detect abnormal patterns, predict possible faults, and evaluate the overall health of the product.

Manufacturers can utilize this information to identify design flaws, optimize power usage, and enhance product durability. By applying such a system, a strong connection is established between the product and the manufacturer, creating opportunities for data-driven product improvement. This approach not only increases the reliability of products but also supports the development of smarter, more efficient, and sustainable technologies for the future.

The proposed system introduces a smarter approach to product management by transforming ordinary devices into intelligent, self-monitoring units. Unlike traditional methods that rely on periodic inspections, this IoT-based framework enables continuous observation and instant reporting of abnormal behavior. Such real-time awareness not only helps in preventing unexpected failures but also supports predictive maintenance strategies, reducing operational costs and improving user satisfaction. By leveraging sensor data and cloud intelligence, the system contributes to building a more connected, reliable, and efficient ecosystem for modern industries.

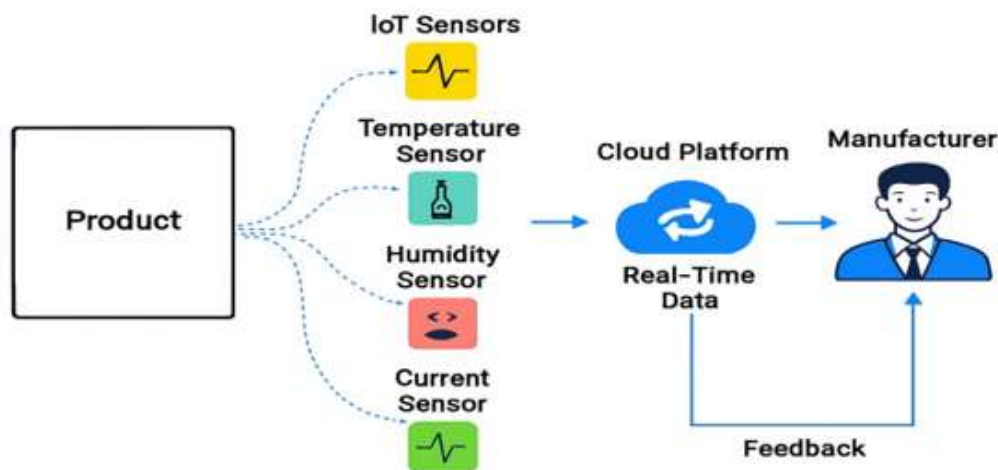


Figure 1: System Architecture

IoT Sensors:

These sensors are the core of the system. They are attached to the product to continuously monitor its various physical and electrical parameters. The sensors collect real-time data, which helps in understanding how the product is performing during operation.

Temperature Sensor:

This sensor measures the heat levels of the product. It helps detect overheating issues, which can indicate potential faults or stress on components. Monitoring temperature ensures the product operates within safe limits.

Humidity Sensor:

The humidity sensor tracks the moisture level in the surrounding environment. High humidity can affect the performance and lifespan of electronic products, so this data helps assess environmental impact on product reliability.

Current Sensor:

The current sensor measures the amount of electrical current flowing through the product. It helps monitor power usage and can detect abnormal current patterns, which may signal faults or inefficiencies.

Cloud Platform:

The cloud platform acts as a storage and processing hub for all the sensor data. It receives real-time information from the product and securely stores it for further analysis. The cloud also enables remote access and monitoring from anywhere.

Data Analysis Module:

Once the data is collected on the cloud, it is analyzed to identify patterns, detect early signs of malfunction, and predict possible failures. This helps in making data-driven decisions for maintenance and design improvement.

Manufacturer Interface:

The analyzed results are shared with the manufacturer through a dashboard or report. This allows manufacturers to get insights about product performance, detect design flaws, and provide timely maintenance support.

Feedback System:

Based on the analysis, the manufacturer can send feedback or updates back to the product system. This continuous feedback loop helps improve product performance, extend lifespan, and reduce future issues.

II. Literature

1. "AI-Driven Fault Detection and Predictive Maintenance in Electrical Power Systems" Authors: R. S. Rana (2025) Summary: This paper presents an AI-based framework for detecting faults and



performing predictive main tenance in electrical power systems. The sys tem uses machine learning to anticipate equip ment failures, reduce downtime, and optimize maintenance schedules.

2. “Internet of Things Enabled Device Fault Prediction System Using Machine Learning” Authors: A. K. Sahu et al. (2024) Sum mary: The study proposes an IoT-enabled de vice fault prediction system using machine learning. Real-time sensor data is analyzed to forecast device failures, enabling preventive maintenance and improving operational effi ciency.

3. “Review of Self-Healing IoT Networks Based on AI-Driven Models” Authors: S. Verma et al. (2023) Summary: This review explores self-healing IoT networks powered by AI. It covers fault detection, automated recovery, and network resilience strategies, highlighting the latest developments and chal lenges in autonomous IoT systems.

4. “AI-Driven Fault Detection and Pre dictive Maintenance in Electrical Power Sys tems” Authors: R. S. Rana (2025) Summary: Published in AJATES, this work details a predictive maintenance approach using AI in electrical power systems. The methodology emphasizes early fault identification, risk re duction, and maintaining continuous opera tions via machine learning

III. Key Challenges and Re search

Data Transmission and Management: Sending real-time data to the cloud and man aging large amounts of sensor information efficiently is a big challenge. Reliable internet connectivity and sufficient storage are also important concerns.

Security and Privacy Issues: Protecting user and product data during transmission and storage is crucial. Data must be kept safe from unauthorized access or misuse.

Lack of Standardized Framework: There is no common system or standard method for analyzing and sharing sensor data between dif ferent products or companies, which limits compatibility and scalability

IV. Methodology

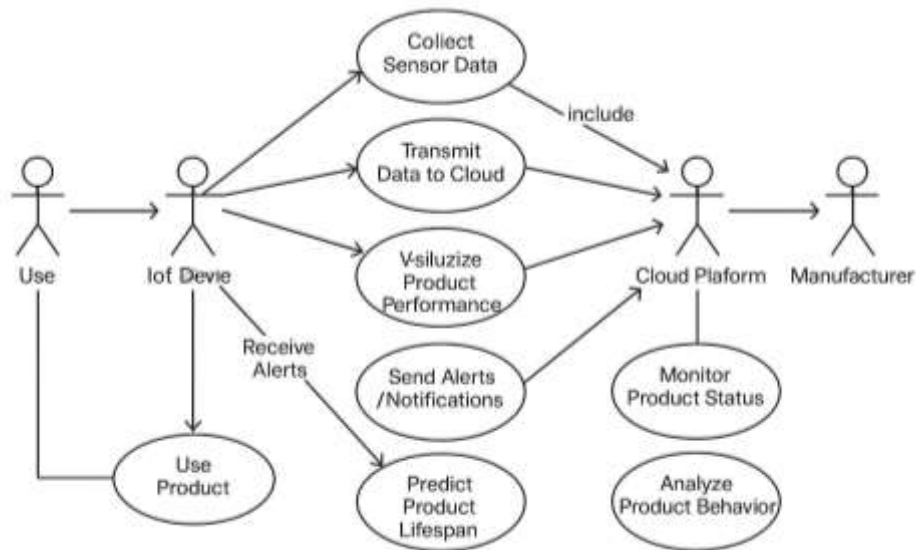
The proposed system uses a combination of sensors and IoT technology to monitor the condition of electronic products in real time. Sensors such as temperature, humidity, volt age, and current are connected to a microcon troller like ESP32 or Raspberry Pi. These sen sors continuously record various parameters that indicate the performance and health of the product.

The microcontroller collects and processes the sensor data locally and then sends it to a cloud platform such as Firebase or ThingS peak for storage and analysis. The system helps detect issues like overheating, abnormal voltage, or excessive power consumption.

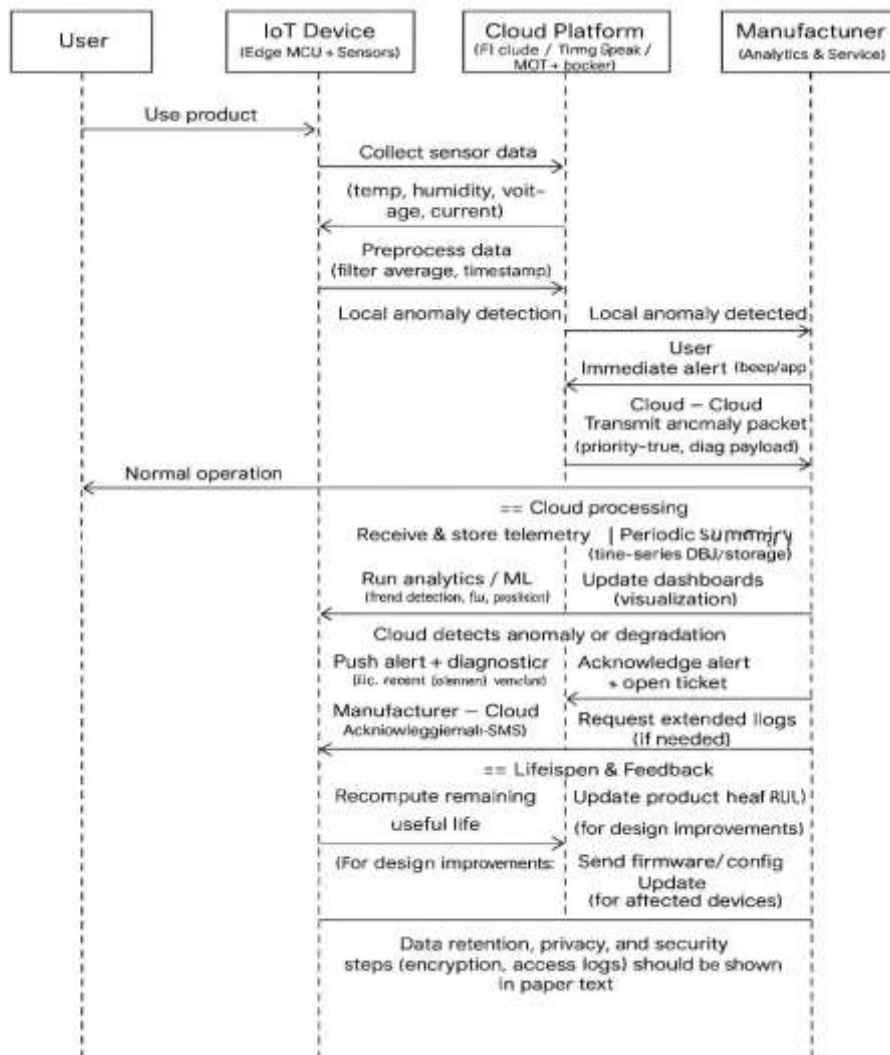
Manufacturers can use this cloud data to study performance trends, predict possible faults, and improve product design and efficiency. This IoT-based system ensures continuous monitoring, reduces manual inspection, and enables data-driven decision making for better product reliability

Working Flow of the System :- The work ing of the system begins with the sensors col lecting real-time data from the electronic prod uct. This data is first processed by the mi crocontroller to remove noise and detect any sudden irregularities. After preprocessing, the microcontroller uploads the data to the cloud platform through Wi-Fi. The cloud stores and analyzes the information, allowing both users and manufacturers to monitor the product’s condition remotely. If any abnormal readings or faults are detected, an alert or notification is sent to the user via a connected mobile appli cation. Meanwhile, manufacturers can access the stored data to analyze performance trends and predict potential failures

Use Case Diagram :-



Sequence Diagram :-





V. Conclusion

This project presents an effective IoT and AI based system for smart monitoring and predictive maintenance of home appliances. The system creates a useful connection between users and manufacturers, where real-time sensor data helps in predicting faults and improving the overall product design. By using simple and efficient AI models, the system stays practical, cost-effective, and suitable for real world applications, even in low-resource environments. In the future, the system can be further improved by using advanced data-sharing methods, applying deep learning for better accuracy in multi-sensor analysis, and connecting it with smart home ecosystems for seamless automation and control

References

- [1] R. S. Rana, 'AI-Driven Fault Detection and Predictive Maintenance in Electrical Power Systems,' AJATES, 2025.
- [2] A. K. Sahu et al., 'Internet of Things Enabled Device Fault Prediction System Using Machine Learning,' IJIRSET, 2024.
- [3] S. Verma et al., 'Review of Self-Healing IoT Networks Based on AI-Driven Models,' IEEE Access, 2023
- [4] P. Chaves, T. Fonseca, L. L. Ferreira, B. Cabral, O. Sousa, A. Oliveira, and J. Landeck, "An IoT Cloud and Big Data Architecture for the Maintenance of Home Appliances," IEEE, 2025.
- [5] A. Papaioannou, A. Dimara, C. Papaioannou, I. Papaioannou, S. Krinidis, C.-N. Anagnostopoulos, C. Korkas, E. Kosmatopoulos, D. Ioannidis, and D. Tzouvaras, "Simulation of Malfunctions in Home Appliances' Power Consumption," *Energies*, vol. 17, no. 4529, pp. 1–31, 2024.
- [6] E. Zero, M. Sallak, and R. Sacile, "Predictive Maintenance in IoT-Monitored Systems for Fault Prevention," *Journal of Sensor and Actuator Networks*, vol. 13, no. 57, pp. 1–20, 2024