



## AI BASED DETECTION AND PREDICTION OF ANIMAL CROSSINGS FOR ROAD SAFETY

**Prof. Rohit Sharma**, Department of CSE( Data Science), JD College of Engineering and Management, Nagpur, India : [rbsharma@jdcoem.ac.in](mailto:rbsharma@jdcoem.ac.in)

**Tanmay Jagtap**, Department of CSE( Data Science), JD College of Engineering and Management, Nagpur, India : [tanmayjagtap929@gmail.com](mailto:tanmayjagtap929@gmail.com)

**Piyush Zalke**, Department of CSE( Data Science), JD College of Engineering and Management, Nagpur, India : [piyushzalke45@gmail.com](mailto:piyushzalke45@gmail.com)

**Ankit Chore**, Department of CSE( Data Science), JD College of Engineering and Management, Nagpur, India : [ankitchore048@gmail.com](mailto:ankitchore048@gmail.com)

### Abstract

This study presents a real-time AI-based detection and alert system designed to address the growing concern of animal-related road accidents in wildlife corridors, rural highways, and forest-adjacent roads. The objective is to simulate a lightweight, resource-efficient framework that can act as a prototype for future intelligent traffic safety systems. Leveraging the power of computer vision, the system utilizes the YOLOv8 object detection algorithm to accurately identify animals appearing in the camera's field of view. The application supports both webcam and pre-recorded video input and is integrated into a user-friendly graphical interface built using Streamlit. Upon detecting an animal, the system immediately displays a visual alert on the screen and plays a pre-defined warning sound, mimicking how an advanced driver-assistance system (ADAS) might react in real-world scenarios. Additionally, an optional Area of Interest (AOI) feature can be toggled to visually highlight critical regions of the video frame that are most relevant for detecting potential threats. Unlike complex autonomous driving solutions, this implementation focuses on accessibility, simplicity, and educational value. The use of pre-trained YOLO models reduces the need for large training datasets, making it feasible for students and developers with limited computational resources. This paper documents the design, implementation, and deployment of the system, and discusses its effectiveness as a foundation for scalable, AI-driven road safety interventions. The project serves as a hands-on demonstration of how computer vision and machine learning can be meaningfully applied to real-world safety challenges in a modular, interactive, and explainable manner.

**Keywords** · Computer Vision · YOLOv8 · Object Detection · Machine Learning · AI-based Detection · Real-Time Processing · Pre-Trained Models · Streamlit Interface

### 1. INTRODUCTION

Road safety has become an increasingly urgent concern in recent years, especially in regions where highways intersect with natural habitats, rural environments, and forest-adjacent areas. Vehicular collisions involving animals pose a dual threat: they endanger human lives and contribute to serious ecological imbalances. Such incidents also lead to economic losses due to vehicle damage, medical expenses, and disruptions in transportation. In countries like India, where large sections of highways pass through or near wildlife zones, these accidents occur frequently. Many of these stretches lack proper monitoring systems, warning signboards, or designated animal corridors. Drivers often remain unaware of approaching animals until the last moment, making preventive action nearly impossible. This situation highlights the pressing need for intelligent, accessible, and real-time systems capable of providing early alerts to reduce the likelihood of animal-related road accidents.

Advancements in artificial intelligence and computer vision have created new opportunities to build such systems. Modern object detection models, especially those from the YOLO (You Only Look Once) family, have demonstrated exceptional capability in identifying and tracking objects quickly



and accurately. Their ability to process visual data in real time makes them suitable for applications such as surveillance, autonomous driving, and safety monitoring. However, most commercial or large-scale intelligent traffic systems rely on expensive infrastructure, powerful hardware, and seamless integration with advanced vehicular technologies. As a result, they remain inaccessible to smaller communities, educational institutions, and low-resource environments where affordable solutions are most needed.

To address this gap, the present project introduces a lightweight, real-time animal detection and alert system developed using YOLOv8 and Streamlit. The system is intentionally designed to be resource-efficient, simple to deploy, and suitable for students, researchers, and developers. The application processes both live webcam input and pre-recorded videos, enabling flexibility in testing and real-world adaptation. When an animal is detected within the camera frame, the system immediately triggers visual alerts on the interface and plays an audio warning sound. This response mimics the core functionality of Intelligent Driver Assistance Systems (IDAS), offering users a practical demonstration of how such technology could operate in real driving environments.

A notable feature of this system is the optional Area of Interest (AOI) tool. This allows users to highlight specific zones within the video frame—typically areas near the road edges where animal movement is most likely to occur. By focusing detection efforts on these zones, the system becomes more interpretable and user-friendly, especially for educational demonstrations or prototype deployment. The AOI toggle also helps users understand how intelligent monitoring systems prioritize specific regions of interest to improve accuracy and reduce false positives.

The primary objective of this paper is to present a cost-effective and standalone prototype that showcases the potential of AI-driven solutions for enhancing road safety, particularly in rural and wildlife-sensitive regions. This project aims to bridge the gap between complex autonomous driving technologies and accessible public safety tools by offering a modular, scalable, and easy-to-understand framework. The work serves as a foundation for future research and development, illustrating how deep learning, computer vision, and interactive user interfaces can be combined to create meaningful, real-world applications in public safety.

## 2. RELATED WORK

The use of artificial intelligence in road safety has grown significantly in recent years, particularly in the domains of object detection, autonomous driving, and real-time surveillance. Several studies have focused on developing systems capable of identifying obstacles, pedestrians, and vehicles using deep learning models such as YOLO (You Only Look Once), SSD (Single Shot MultiBox Detector), and Faster R-CNN. Among these, YOLO has gained popularity due to its real-time performance and relatively low computational requirements, making it suitable for edge devices and embedded systems.

Animal detection for road safety, however, remains an underrepresented area of research. While some commercial vehicles integrate pedestrian or obstacle detection, few implementations are tailored specifically to detect animals crossing roads, especially in forested and rural zones. Projects like the “Wildlife-Vehicle Collision Reduction Study” in the U.S. have emphasized the need for detection and alert systems, but these solutions often involve costly infrastructure like thermal cameras and sensors embedded in roads.

In contrast, this project proposes a lightweight and cost-effective solution using a pre-trained YOLOv8 model that can run on consumer-grade hardware. Streamlit is used to offer an accessible and interactive interface, allowing real-time video input from webcams or uploaded files. Unlike previous works that focus heavily on autonomous vehicle integration, this system is designed to function independently as

a standalone prototype, useful for educational demonstrations, public awareness, and as a foundation for future integrations with Intelligent Driver Assistance Systems (IDAS).

This work distinguishes itself by targeting the specific problem of animal crossings using affordable, open-source tools, while maintaining a modular structure that allows easy upgrades or deployment across various scenarios.

### 3. METHODOLOGY

The proposed system follows a modular, real-time detection pipeline that integrates deep learning with an intuitive user interface. The methodology is divided into four key components: input acquisition, object detection, alert triggering, and visual display. Each module is designed to work in harmony, allowing seamless processing of video data and instantaneous response upon detecting animals in the frame.

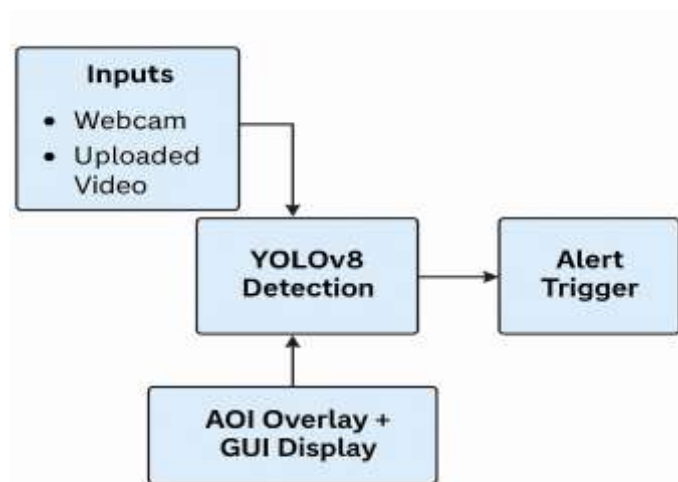


Fig 1. System Architecture Block Diagram

Fig.1: System Architecture Block Diagram

#### 3.1 Input Acquisition

The system supports two modes of input: webcam feed and uploaded video files (in formats such as .mp4, .avi, or .mov). Streamlit’s file\_uploader() widget and OpenCV’s VideoCapture() class are used to stream frames from the chosen source into the detection pipeline.

#### 3.2 YOLOv8-Based Animal Detection

A pre-trained YOLOv8n (nano) model, sourced from the Ultralytics repository, is used for object detection. YOLO (You Only Look Once) is a single-stage detection algorithm capable of detecting objects in real-time with impressive speed and accuracy. In this system, the model identifies animals in each frame, draws bounding boxes around them, and classifies the type of animal (e.g., dog, cow, deer) using the COCO dataset’s predefined labels. The use of the nano version ensures the model remains lightweight and efficient even on CPU-based machines.

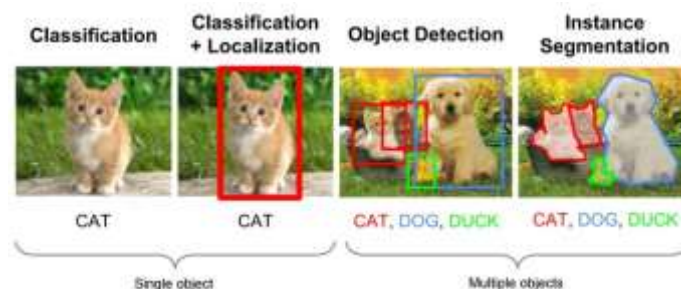


Fig.2: Workflow of YOLO model



### 3.3 Alert System

Once an animal is detected, a dual alert mechanism is triggered:

A visual warning is displayed on the bottom-left of the screen with the message “Animal Detected – Stay Alert!”.

An audio warning, using a custom Alert.wav sound file, is played once per detection event to simulate real-life driver alerts. The playsound Python module is used to trigger this audio.

### 3.4 AOI Overlay and GUI

An Area of Interest (AOI) feature is included as a toggle, allowing the user to visualize high-risk areas in the frame (typically the left and right borders representing road edges). Pressing the T key toggles red AOI borders on and off. The entire system is integrated into a clean Streamlit-based user interface that updates in real-time, making it easy to demonstrate functionality in a classroom, lab, or live test environment.

This modular approach makes the system easy to maintain, extend, and customize for other applications such as wildlife monitoring, pedestrian safety, or drone-based surveillance.

## 4. APPLICATIONS

The developed system has broad potential across domains involving road safety, environmental protection, and real-time surveillance. While it currently functions as a lightweight academic prototype, its core modules can be easily adapted to larger, more complex systems. Key applications include:

### 4.1 Wildlife and Rural Road Safety

A primary use case is in wildlife corridors and rural highways, where animal-vehicle collisions are common. The system can be deployed on roadside poles or integrated with smart cameras to monitor road activity and issue real-time alerts.

### 4.2 Driver Assistance Systems (ADAS)

With minimal modifications, the system can be embedded within vehicles as a part of Intelligent Driver Assistance Systems. It can provide visual and auditory cues to drivers in forest or village areas, complementing other sensors like LIDAR and ultrasonic detectors.

### 4.3 Smart City and Traffic Management

In the context of smart cities, the system can act as an AI module for urban surveillance setups. It can help traffic authorities track animal movement patterns, prevent accidents, and integrate with traffic signal logic for preventive action.

### 4.4 Education and Research

Given its modular design and reliance on open-source tools, the system serves as an ideal learning resource for students and researchers exploring real-time computer vision, object detection, and AI in public safety. It can be used in workshops, project labs, or hackathons to showcase applied AI.

### 4.5 Wildlife Conservation Monitoring

Beyond road safety, the detection framework can be adapted for non-invasive wildlife monitoring using drones or stationary cameras in forests and reserves. This would aid in studying animal movement behavior while reducing the risk of human-animal conflict.

## 4. GUI INTEGRATION



A key strength of the system lies in its user-friendly and interactive graphical user interface (GUI), built using Streamlit, an open-source Python framework ideal for deploying data science and machine learning applications. The GUI simplifies interaction with the model, removes the need for command-line inputs, and allows real-time detection and feedback, making it highly accessible for students, researchers, and non-technical users.

### 5.1 Streamlit Interface Components

The main elements of the interface include:

- **Input Source Selector:** A radio button sidebar lets users choose between Webcam and Upload Video modes.
- **File Uploader:** If “Upload Video” is selected, a file explorer automatically appears, allowing users to choose .mp4, .avi, or .mov video files directly from their system.
- **Start Button:** Detection begins only when the user clicks the Start Detection button, ensuring clarity and control in demonstrations.
- **Live Frame Display:** A real-time display of each video frame with bounding boxes, animal labels, AOI overlays, and alert text is shown using Streamlit’s `st.image()` widget.

### 5.2 Real-Time Feedback Elements

- **Alert Message:** When an animal is detected, a small but prominent warning — “Animal Detected – Stay Alert!” — appears on the bottom-left of the video frame.
- **AOI Toggle:** Users can press the “T” key to toggle visibility of red “Area of Interest” zones on the left and right portions of the screen. A message — “Press T to Toggle AOI” — is always visible at the top-left for instruction.

### 5.3 Streamlined Deployment

Because the entire GUI is web-based and hosted locally by Streamlit, users only need to run a single command to launch the app:

- `streamlit run app.py`

No complicated installation, dashboards, or dependencies are required beyond Python and pip.

### 5.4 Educational and Demo Value

The GUI not only simplifies testing but also significantly enhances the demo quality for presentations or live evaluations. Its visual design ensures that detection results are easy to understand even for those without a technical background. This makes the system highly effective in academic environments and prototype showcases.

## 6. LIMITATIONS

While the system performs reliably in controlled conditions, several challenges were encountered that highlight the limitations of deploying such AI solutions in real-world environments:

### 6.1 Limited Animal Dataset

The model used (YOLOv8n) is trained on the COCO dataset, which includes only a few animal categories (e.g., dog, cat, cow). This restricts the system’s ability to detect region-specific wildlife such as deer, elephants, or wild boars unless custom training is performed on additional datasets.

### 6.2 Daylight and Visibility Constraints

The current implementation relies on standard RGB video input, which is sensitive to lighting conditions. Low-light, nighttime, or foggy environments can significantly reduce detection accuracy without the use of infrared or thermal imaging systems.



### 6.3 False Positives and Object Confusion

In some test scenarios, objects like bushes, plastic bags, or shadows were occasionally misclassified as animals. While confidence thresholds reduce such errors, perfect filtering would require more advanced context-aware processing.

### 6.4 Performance Limitations on Low-End Devices

Although the system uses a lightweight model, processing real-time video on CPU-only machines can still cause occasional frame lag. For larger deployments, optimization through GPU acceleration or edge computing hardware (e.g., Jetson Nano, Raspberry Pi 4) would be required.

### 6.5 Lack of Predictive Intelligence

The current system detects animals but does not predict crossing behaviour or direction, which would be valuable for triggering pre-emptive alerts. Integrating movement tracking or trajectory analysis would significantly enhance the system's effectiveness.

## 7. FUTURE SCOPE

While the current system provides a functional prototype for animal detection and alerting, there are several enhancements that can significantly improve its real-world impact, adaptability, and scalability:

### 7.1 Custom Model Training for Regional Species

Future versions can include custom-trained YOLO models using datasets specific to local wildlife (e.g., deer, nilgai, elephants) to improve detection coverage in particular geographic regions. This would expand the system's effectiveness beyond the limited set of animals in the COCO dataset.

### 7.2 Integration with Vehicle Systems

The solution can be further developed into a full-fledged module for Intelligent Driver Assistance Systems (ADAS) by integrating with car dashboards or navigation apps to deliver real-time alerts during high-risk driving zones.

### 7.3 Night Vision and Thermal Support

To overcome limitations in low-light conditions, the system can be integrated with infrared (IR) or thermal cameras for night-time detection. YOLO models can be retrained or adapted to process thermal video input for better accuracy during nighttime driving.

### 7.4 Trajectory Prediction and Early Alerts

Adding motion tracking algorithms and trajectory prediction can allow the system to anticipate animal movement across the frame and issue alerts even before crossing occurs, increasing driver reaction time.

### 7.5 Cloud and IoT Integration

In large-scale smart city or rural highway setups, the system can be extended to work with IoT-enabled cameras and edge devices, sending alerts to cloud dashboards, traffic management centres, or nearby digital signage for dynamic warning systems.

## 8. CONCLUSION

This project demonstrates the practical feasibility of leveraging deep learning and computer vision to enhance road safety through real-time detection of animals along highways, rural routes, and forest-adjacent roads. By integrating a lightweight YOLOv8 object detection model with an



interactive, user-friendly Streamlit interface, the system effectively identifies animals appearing in live video streams—whether from a connected webcam or from pre-recorded footage. Once a detection occurs, the system immediately delivers both visual cues on the interface and auditory warning alerts, thereby simulating how an advanced driver assistance system (ADAS) could notify drivers of imminent hazards. The inclusion of features such as Area of Interest (AOI) toggling, real-time frame rendering, and simple input controls improves usability, making the application especially suitable for demonstrations, academic learning, and rapid prototyping.

Beyond basic detection, the design emphasizes accessibility and modularity, ensuring that users with limited computational resources can still benefit from the system. The choice of YOLOv8's pre-trained models

remove the need for extensive dataset preparation or large-scale training, making the pipeline highly approachable for students, early researchers, and developers working in low-resource settings. The clean Streamlit interface further contributes to the system's ease of adoption, allowing developers to extend, customize, and integrate the detection module with minimal effort.

While the current implementation offers reliable real-time performance, it also comes with certain limitations. The detection accuracy may decrease under poor lighting, nighttime conditions, or environments with heavy occlusion. Additionally, since the system currently focuses on a limited number of animal classes available in the pre-trained model, its coverage is restricted compared to real-world wildlife diversity. These limitations, however, are acknowledged and framed as opportunities for future work. Potential enhancements include integrating thermal or infrared imaging to support nighttime detection, expanding the detection classes through custom dataset training, and implementing trajectory prediction to forecast the movement of animals entering the roadway. Further advancements could explore IoT and cloud connectivity, enabling remote alerts, data logging, and real-time analytics across traffic monitoring centres.

Overall, this work stands as a meaningful demonstration of how artificial intelligence can be applied to real-world safety challenges in an affordable and scalable manner. It provides a strong foundation for developing next-generation road safety solutions aimed at reducing wildlife-related accidents and improving driver awareness in high-risk regions. By bridging the gap between high-end autonomous driving technologies and accessible open-source tools, the system highlights the potential of community-driven innovation in addressing pressing public safety issues.

## 9. REFERENCES

- [1] Redmon, J., et al. You Only Look Once: Unified, Real-Time Object Detection. Proceedings of the IEEE Conference on Computer Vision and Pattern Recognition (CVPR), 2016.
- [2] Jocher, G., et al. YOLOv5 by Ultralytics. GitHub Repository, <https://github.com/ultralytics/yolov5>, 2020–2024.
- [3] Wang, C.-Y., et al. YOLOv7: Trainable Bag-of-Freebies Sets New State-of-the-Art for Real-Time Object Detectors. arXiv preprint arXiv:2207.02696, 2022.
- [4] Bochkovskiy, A., et al. YOLOv4: Optimal Speed and Accuracy of Object Detection. arXiv preprint arXiv:2004.10934, 2020.
- [5] Saponara, S., et al. Real-Time Video Processing for Road Safety in Smart Cities Using AI and Embedded Systems. Sensors, 2020.
- [6] Nidhi, R., et al. An Efficient Pedestrian and Animal Detection Technique for Rural Road Safety. International Journal of Intelligent Transportation Systems Research, 2021.
- [7] Lin, T.Y., et al. Microsoft COCO: Common Objects in Context. European Conference on Computer Vision (ECCV), 2014.
- [8] Streamlit Inc. Streamlit: Turn Python Scripts into Interactive Web Apps. <https://streamlit.io>, Accessed 2025.



- [9] Bruls, R., et al. Animal Detection Using Computer Vision: A Survey. IEEE Access, 2021.
- [10] Ghosh, A., et al. A Review of Animal-Vehicle Collision Detection Systems in India. International Journal of Road Safety Research, 2022.
- [11] OpenCV.org. Open Source Computer Vision Library. <https://opencv.org>, Accessed 2025.
- [12] Chen, L., et al. Real-Time Wildlife Detection for Autonomous Vehicles. Applied Sciences, 2022.
- [13] Krizhevsky, A., et al. ImageNet Classification with Deep Convolutional Neural Networks. Advances in Neural Information Processing Systems, 2012.
- [14] Government of India. Road Accidents in India – 2022 Annual Report. Ministry of Road Transport and Highways, 2023.
- [15] Gadepalli, S., et al. A Lightweight AI-Powered Traffic Monitoring System for Developing Countries. Proceedings of the IEEE Smart Cities Conference, 2021.