



**A SURVEY PAPER ON SIGN LANGUAGE RECOGNITION**

**Prof.Sneha Tirth, Aayush Gavale, Aditya Jagtap, Anushka Pansande, Aditya Jaiswal** Trinity  
College Of Engineering And Research, Pune-48, Maharashtra, India

**Abstract—**

Sign language recognition technology, a critical component of human-computer interaction, addresses the communication gap between the deaf and hearing communities. This review paper explores the historical development, methodologies, challenges, and applications of sign language recognition systems. We delve into data collection, pre-processing, feature extraction, and classification methodologies, as well as the impact of sensors and sensor technologies. The paper highlights the role of machine learning and deep learning, presents real-world applications, and outlines the challenges and future directions in this dynamic field. Sign language recognition is more than a convenience; it is an empowering tool that fosters inclusivity and accessibility, enhancing communication for all.

**Keywords:** Research Paper, Sign Language Recognition, Deaf and Hard of Hearing, Machine Learning, Computer Vision, Gesture Recognition

## 1 INTRODUCTION

Sign language, as a rich and expressive mode of communication, serves as a fundamental medium of interaction for the deaf and hard-of-hearing communities. It is a visual-gestural language with its own grammar, vocabulary, and cultural nuances. For centuries, it has been a vital means of facilitating communication, enabling the deaf to convey their thoughts, emotions, and ideas to the world. However, there exists a significant communication gap between the deaf and hearing communities due to the linguistic disparities and the limited understanding of sign languages among the general populace.

Sign language serves as a vital mode of communication for the Deaf and Hard of Hearing community, facilitating expression and interaction with the world. However, the communication barrier between sign language users and those who do not understand sign language remains a significant challenge. To bridge this gap, sign language recognition systems have emerged as a promising solution. This paper presents an study into the

Design and implementation of a sign language recognition system, which harnesses the power of machine learning and computer vision techniques to interpret and understand sign language gestures. In this era of advancing technology, such systems hold the potential to significantly enhance accessibility and inclusivity for Deaf and Hard of Hearing individuals, promoting effective communication and understanding across diverse communities.

The advancement of technology has paved the way for innovative solutions aimed at bridging this communication gap. Sign language recognition, a subfield of human-computer interaction and artificial intelligence, has emerged as a pivotal domain dedicated to the development of systems capable of interpreting and translating sign language gestures into text or speech, and vice versa. This technology is not merely a matter of convenience; it is an instrument of empowerment and inclusivity, offering deaf individuals the means to participate more fully in education, employment, and social interactions.

## 2. OBJECTIVES

The objective of sign language recognition is to develop technology and systems that can accurately interpret and understand sign language gestures and expressions made by individuals who are deaf or hard of hearing. This technology is designed to bridge the communication gap between the deaf and hearing communities, enabling more effective and inclusive communication. Enhance accessibility for

the Deaf and Hard of Hearing community by creating a tool that allows effective communication with non-signers.

The Sign Language Recognition Prototype is a real-time vision- based system whose purpose is to recognize the Sign Language given in the alphabet. The goal of the prototype was to evaluate the authenticity of a vision-centric system for sign language comprehension and concurrently assess and choose hand attributes that could be employed with machine learning algorithms, enabling their utilization in any live sign language recognition systems.

Raise awareness about the importance of sign language recognition and foster a more inclusive and understanding society that respects linguistic diversity. Encourage ongoing research and development to improve the accuracy and efficiency of sign language recognition systems, making them more practical and effective.

Education and Learning: Sign language recognition supports sign language learners by providing feedback and assistance in acquiring sign language skills, which is especially beneficial for non-native signers and those learning as a second language.

- A. To provide an efficient and accurate way to convert sign language into text.
- B. To recognize accurate sign language with lower rate of errors.
- C. To review the sign language recognition approaches and find best methods.

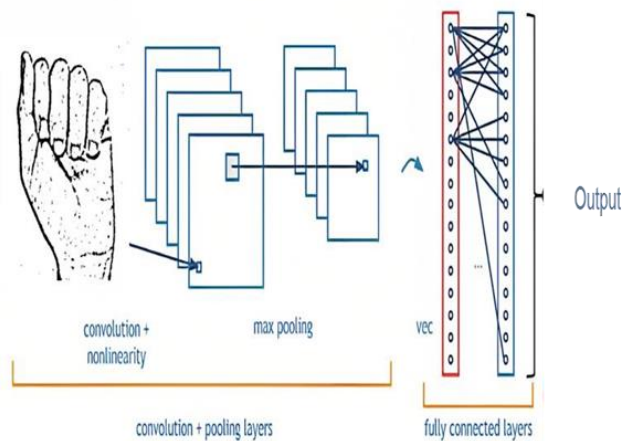


Fig. 1. System Architecture

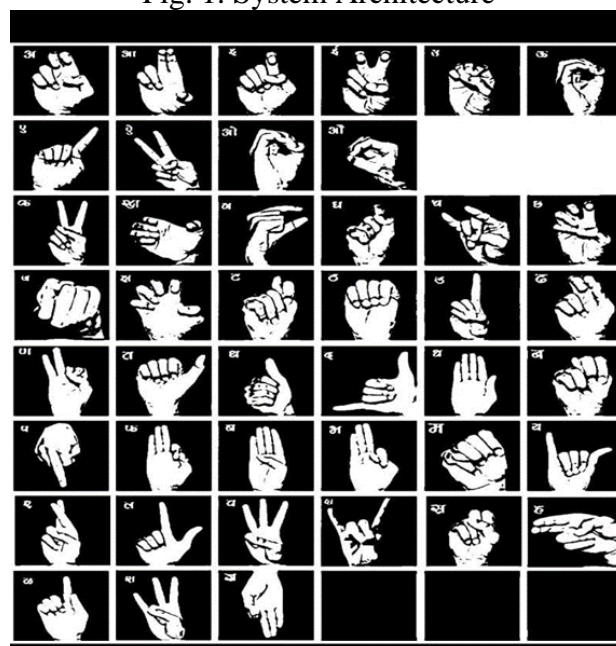


Fig. 2. Sign Language Alphabets



### 3 WORKING

Sign language recognition is the process of using technology to interpret and understand sign language gestures made by individuals, typically deaf or hard of hearing, and convert them into spoken or written language. Here's an overview of how sign language recognition systems typically work:

1. **Data Collection:** Sign language recognition systems often start with the collection of a dataset that includes video recordings of sign language gestures. This dataset is used for training and testing the recognition algorithms.
2. **Preprocessing:** The collected video data is preprocessed to enhance the quality and prepare it for analysis. This may involve background removal, noise reduction, and normalization of lighting conditions.
3. **Feature Extraction:** Features are extracted from the preprocessed video frames. These features can include hand and finger positions, facial expressions, and other relevant characteristics. Key points might be extracted from the sign language gestures.
4. **Recognition Algorithm:** Machine learning and computer vision techniques are often employed to develop recognition algorithms. Deep Learning: Convolutional Neural Networks (CNNs) and Recurrent Neural Networks (RNNs) have shown promise in sign language recognition.
5. **Training:** The recognition algorithm is trained using the labeled dataset. This helps the system learn the relationships between features and sign language gestures.
6. **Testing and Validation:** The trained system is tested using a separate dataset to evaluate its accuracy and performance. Cross-validation techniques are often used to assess the system's generalization capabilities.
7. **User Interface:** The output of the recognition system can be presented to users in various forms, such as spoken language output, text, or even animated avatars mimicking the gestures.

### 4 LITERATURE SURVEY

- 1) **A CNN based human-computer interface for American Sign Language recognition for hearing-impaired individuals:** The author develops an interface using a convolutional neural network, [1][2][4] based on sign language to interpret gestures and hand poses of signs. They used a deep learning algorithm and open cv for accessing the camera. The author developed their own dataset so it helps in the prediction of hand pose and it helps to increase the accuracy. The dataset may be used to develop SLR systems Sign Language Recognition System using TensorFlow Object Detection API [2] The drawback is that not everyone possesses the knowledge of sign languages which limits
- 2) **communication.** This restriction can be surmounted through the implementation of automated Sign Language Recognition systems, which will have the capability to seamlessly transform sign language gestures into widely used spoken language..
- 3) **Sign language identification and recognition: A comparative study.** Numerous algorithms and methods were employed to recognize Sign Languages (SLs) and distinguish various languages with varying levels of precision.
- 4) **End-to-end Hand Shape and Continuous Sign Language Recognition SubUNets** allow the incorporation of domain-specific expert knowledge and enable better intermediate representations.
- 5) **Sign Language Recognition, Generation, and Translation: An Interdisciplinary Perspective**[5][7] The author develops an interface using a CCS Concept(Human Centered Computing), Natural Language Interfaces
- 6) **Sign Language Recognition For Sentence Level Continuous Signings.** The paper addresses a real-world issue by focusing on sign language, a primary communication method for the hearing-impaired.

### 5. COMPARATIVE STUDY

Sr.no	Paper Name	Author Name	Methodology	Advantage	Disadvantage
[1]	A CNN based human computer interface for American Sign Language recognition for hearingimpaired individuals. [2022]	Ahmed Kasapbasi Ahmed Eltayeb Ahmed Elbushra Omar Al-Hardanee Arif Yilmaz	CNN(Convolutional Neural Networks)	The system gives 95.50% accuracy due to the large dataset.	Background affects accuracy, so it was necessary to have the right background.
[2]	Sign Language Recognition System using TensorFlow Object Detection API	Sharvani Srivastava, Amisha Gangwar, Richa Mishra, Sudhakar Singh	CNN(Convolutional Neural Networks), Computer Vision	In this paper, it has been done by TensorFlow object detection API.  The system has been trained on the Indian Sign Language dataset. The system detects sign language in real-time.	Accuracy rate is only 85%
[3]	Sign language identification and recognition: A comparative study	Ahmed Sultan, Walied Makram, Mohammed Kayed*, Abdelmageed Amin Ali	Many algorithms and techniques were applied to recognize SLs and identify different languages with variance accuracy	integrating new data they gathered from other deploy-ments into its libraries.	Users are required to wear gloves as they need to engage with systems while wearing them .
[4]	End-to-end Hand Shape and Continuous Sign Language Recognition	Necati Cihan Camgoz, Simon Hadfield, Oscar Koller, Richard Bowden.	SubUNets	SubUNets allow the incorporation of domain-specific expert knowledge and enable better intermediate representations	Hand shape recognition is a challenging task in its own right, due to a hands' highly articulated nature.
[5]	Sign Language Recognition, Generation, and Translation: An Interdisciplinary Perspective	Tessa Verhoef, Patrick Boudreault, Oscar Koller, Hernisa Kacorri	CCS Concept(Human Centered Computing), Natural Language Interfaces	provide an interdisciplinary overview of sign language recognition, generation, and translation	Lack of Cordination, Incomplete Understanding & Duplication of Efforts.
[6]	Sign Language Recognition For Sentence Level Continuous Signings.	Ishika Godage, Ruvan Weerasignhe and Damitha Sandaruwan	Computer Vision, Supervised Learning, EMG, IMU.	The paper addresses a real-world issue by focusing on sign language, a primary communication method for the hearing-impaired.	The paper does not provide insights into the scalability of the proposed system.
[7]	Skeleton Aware Multi-modal Sign Language Recognition	Songyao Jiang§ , Bin Sun§ , Lichen Wang, Yue Bai, Kumpeng Li and Yun Fu	Concept of our Skeleton Aware Multi-modal Sign Lan-guage Recognition Framework (SAM-SLR). All local and global	Improved Recognition Rates: SAM-SLR achieves the highest performance in both RGB and RGB-D tracks, with impressive accuracy rates of 98.42%	Complexity, Variability, Limited Sample Collection, Traditional SLR Methods.

### CONCLUSION

While a conclusion can recapitulate the primary aspects of the paper, it should refrain from duplicating the abstract. Instead, the conclusion could delve into the significance of the research or propose potential applications and expansions. Authors are highly encouraged to avoid specifically mentioning several figures or tables in the conclusion—these references should be made within the main body of the paper.

Sign language recognition represents a transformative field of technology with profound implications for the deaf and hard of hearing community. Its core objective is to bridge the communication gap between sign language users and those who rely on spoken language, fostering accessibility, inclusivity, and cultural preservation. This technology has the potential to revolutionize education,



facilitate natural interactions, and enable effective communication across linguistic and hearing barriers. While challenges persist in achieving high accuracy and broad recognition, ongoing research and development continue to advance the field, offering promise for a more inclusive and accessible future.

In this study, we have ventured into the realm of sign language recognition, a field that carries immense potential for bridging the communication gap between Deaf and Hard of Hearing individuals and the hearing world. Our primary objective was to design and implement a sign language recognition system that employs machine learning and computer vision techniques to interpret and translate sign gestures in real-time.

## REFERENCES

- [1] KASAPBAŞI, Ahmed & Elbushra, Ahmed & AL- HARDANEE, Omar & YILMAZ, Arif. (2022). DeepASLR: A CNN based Human Computer Interface for American Sign Language Recognition for Hearing-Impaired Individuals. *Computer Methods and Programs in Biomedicine Update*. 2. 100048. 10.1016/j.cmpbup.2021.100048.
- [2] Srivastava, Sharvani & Gangwar, Amisha & Mishra, Richa & Singh, Sudhakar. (2022). Sign Language Recognition System using TensorFlow Object Detection API.
- [3] Sultan, Ahmed & Makram, Walied & Kayed, Mohammed & Ali, Abdelmaged. (2022). Sign language identification and recognition: A comparative study. *Open Computer Science*. 12. 191-210. 10.1515/comp-2022-0240.
- [4] Camgöz, N.C., Hadfield, S., Koller, O., & Bowden, R. (2017). SubUNets: End-to-End Hand Shape and Continuous Sign Language Recognition. *2017 IEEE International Conference on Computer Vision (ICCV)*, 3075-3084.
- [5] Bragg, Danielle & Koller, Oscar & Bellard, Mary & Berke, Larwan & Boudrealt, Patrick & Braffort, Annelies & Caselli, Naomi & Huenerfauth, Matt & Kacorri, Hernisa & Verhoef, Tessa & Vogler, Christian & Morris, Meredith. (2019). *Sign Language Recognition, Generation, and Translation: An Interdisciplinary Perspective*.
- [6] Godage, Ishika & Weerasinghe, Ruvan & Sandaruwan, Damitha. (2021). Sign Language Recognition for Sentence Level Continuous Signings. 53-73. 10.5121/csit.2021.112305.
- [7] S. Jiang, B. Sun, L. Wang, Y. Bai, K. Li and Y. Fu, "Skeleton Aware Multi-modal Sign Language Recognition," *2021 IEEE/CVF Conference on Computer Vision and Pattern Recognition Workshops (CVPRW)*, Nashville, TN, USA, 2021, pp. 3408-3418, doi: 10.1109/CVPRW53098.2021.00380.
- [8] A. Kumar, K. Thankachan and M. M. Dominic, "Sign language recognition," *2016 3rd International Conference on Recent Advances in Information Technology (RAIT)*, Dhanbad, India, 2016, pp. 422- 428, doi: 10.1109/RAIT.2016.7507939.
- [9] Varshini, Chava & Hruday, Gurram & Chandu, Guguloth & Sharif, Shaik. (2020). Sign Language Recognition. *International Journal of Engineering Research and*. V9. 10.17577/IJERTV9IS050781.
- [10] R. Daroya, D. Peralta, P. Naval, Alphabet sign language image classification using deep learning, in *IEEE Region 10 Annual Int. Conference, Proceedings/TENCON (2019) vol. 2018-October*, no. October, pp. 646–650, 10.1109/TENCON.2018.8650241
- [11] S. Aly, B. Osman, W. Aly, M. Saber, Arabic sign language fingerspelling recognition from depth and intensity images, in *12th Int. Comp. Eng. Conference, ICENCO 2016: Boundless Smart Societies (2017) 99–104*, <https://doi.org/10.1109/ICENCO.2016.7856452>.



- [12] M.S. Kushwah, M. Sharma, K. Jain, Sign language interpretation using pseudo glove, in Proceeding of Int. Conference on Intelligent Communication. Control and Devices, Adva. Intelligent Syst. Comput. (2017) 9–19, <https://doi.org/10.1007/978-981-10-1708-7>.
- [13] K. He, J. Sun, Deep residual learning for image recognition, in IEEE Conference on Comp. Vision and Pattern Recognition (2016) 770–778, <https://doi.org/10.1109/CVPR.2016.90>.
- [14] P. Kurhekar, J. Phadtare, S. Sinha, K.P. Shirsat, Real time sign language estimation system, in Proceedings of the Int. Conference on Trends in Electronics and Inf. ICOEI 2019 (2019) 654–658, <https://doi.org/10.1109/ICOEI.2019.8862701>, no. Icoei.
- [15] Lacerda, Inês & Nicolau, Hugo & Coheur, Luisa. (2023). Enhancing Portuguese Sign Language Animation with Dynamic Timing and Mouthing.
- [16] Bangham, Andrew & Cox, Stephen & Elliott, R. & Glauert, John & Marshall, I. & Rankov, S. & Wells, Mariah. (2000). Virtual signing: capture, animation, storage and transmission-an overview of the ViSiCAST project. 6/1 - 6/7. 10.1049/ic:20000136.